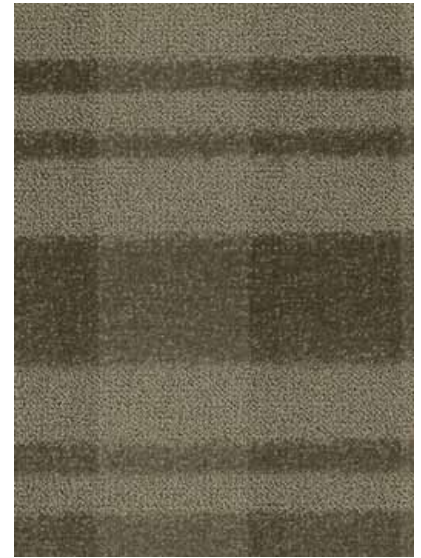


<b>Pattern Repeat</b>	9" W x 17" L
<b>Width</b>	144 (in)
<b>Construction</b>	Cut & Loop
<b>Face Yarn</b>	100% Antron® Legacy Nylon
<b>Yarn Spec</b>	Twisted and Superba Heatset with a minimum of 5.0 Turns per Inch
<b>Treatments</b>	Permanent Static Control, Commercial Carpet Protector & Stainguard Protection
<b>* Tufted Yarn Weight</b>	62 (oz)
<b>** Tufts per Square Inch</b>	216 (Gauge x Stitch Rate x Tufts/Stitch)
<b>Pile Height</b>	0.28125 (in)
<b>Primary Backing</b>	5.5 oz. Multi layered woven and non woven composite for enhanced straightness, tuftbind and edge ravel.
<b>Secondary Backing</b>	Endura Loc™ High Performance backing system with 18 x 8 Lino Woven ActionBac; 10 yr. Warranty for delamination and edge ravel.
<b>Post-Installation Protection</b>	<b>DO NOT USE PLASTIC.</b> Plastic can permanently discolor carpet and cause accelerated soiling. Craft paper, corrugated box material or masonite are recommended.
<b>Recommended Adhesive</b>	Constantine's Premium Adhesive #29 for patterned and non-patterned carpet
<b>Flammability</b>	Passes Class 1 (ASTM E-648) Radiant Panel; Critical Radiant Flux >= .45 W/cm <sup>2</sup> ; Smoke Density (ASTM E-662) < 450
<b>Dye Lot Size</b>	Unlimited
<b>Custom Colors &amp; Weight</b>	Available at Minimum Yardages
<b>Origin</b>	U.S.A.
<b>LEED</b>	All products are available with varying percentages of post-industrial recycled fiber for a minimum of 2,500 sy. Recycled content percentages are determined by the total weight of the product and will be affected by the backing selection. We offer backings with post-industrial and post-consumer recycled content that can increase the total recycled content percentage. All recycled content contributes to the NC and CI LEED rating systems under Materials & Resources, Credit 4.1 Recycled Content, and Credit 4.2 Recycled Content. All of Constantine's™ recommended adhesives qualify as low-emitting adhesives and can contribute to LEED NC & LEED CI, EQ Credit 4.1, and LEED EB, MR Credits 3.1-3.2. All Constantine™ carpets meet CRI Green Label Plus testing and product requirements and can contribute to LEED NC & LEED CI, EQ Credit 4.3.
<b>Warranty</b>	10 Year Wear



\* Tufted yarn weight is measured prior to tip shearing and is subject to post-shear weight variances.

\*\* Constantine incorporates a patented, high density tufting process called multiple yarn infusion. Conventional measurements of gauge and stitch rate are inadequate and misleading. Therefore, tufts per square inch are used to provide accurate specifications.